



TelVue HyperCaster™

The IP Way to Broadcast

Easy & Affordable Digital TV

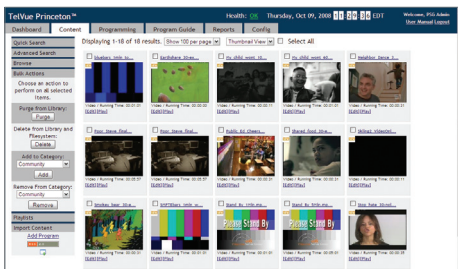
The B100 HyperCaster™ is the easy and affordable way to launch a high quality, professional 24x7 digital television channel within minutes of un-packing. We've engineered the HyperCaster™ with simplicity and reliability in mind through our use of Linux open source technology, plus our proprietary real time video and application software.

The B100 HyperCaster™ provides IP origination for up to four independent digital broadcast channels. The server supports MPEG-2 Transport with MPEG-2 and optional H.264 video codecs in standard or high definition formats, including CableLabs® and ATSC. The HyperCaster's™ native IP over Gigabit Ethernet interface can be easily integrated with any copper or fiber IP network architecture.

The IP origination capability of the server enables file-based workflows and all-digital outputs; eliminating costly, per channel real-time encoders while maintaining your content's original quality. Content is ingested and scheduled via a simple drag and drop interface. The server can publish a searchable program guide for your website or provide schedule data to 3rd party guide services.

TelVue's HyperCaster™ supports PID remapping and IP StreamThru™ that allows seamless switching between files on hard drive and live network streams either on schedule or as default continuity. This unique feature allows the server to double as an IP digital video switcher. The native MPEG-2 Transport capability allows HyperCaster™ to integrate with existing digital ad insertion systems and support EBIF inter-active applications.

The HyperCaster™ can also interface with CCMS-compatible traffic and billing systems such as OpenTV's EclipsePlus® with as-run logs, automatic search and transfer of files from networked storage and missing media notifications. Now campaign management, geo-targeting and yield optimization can be applied to all of your longform programming



Intuitive Content Management System and Scheduling System

APPLICATIONS

- Leased Access Channels
- Local Origination Channels
- Digital CATV Origination
- On-Campus Broadcasting

FEATURES

- Linux Based
- StreamThru™ Digital Video Switching
- PID Remapping
- A Complete "Digital TV Station-In-A-Box" System
- Up To Four Independent Output Streams / Channels
- MPEG-2, SD / HD, ATSC, CableLabs® & H.264 (Optional)
- Traffic & Billing, Middleware Integration
- IT-Friendly, Supports FTP, SMB, HTTP & NTP
- Operate Remotely From Any Web Browser
- Drag And Drop Scheduling
- Customizable Content Categories
- Easily Published Program Guide For Your Website
- Mix Traffic & Billing & Local Scheduling

BENEFITS

- Low Cost And Easy To Operate
- Supports Centralized, Regionalized, Or Edge Architectures
- Store Hundreds Of Hours Of Content
- Designed For 24 x 7 Reliability
- Just 1RU (1.75") Of Rack Space

B100 HyperCaster Specifications

We've engineered the TelVue HyperCaster™ with simplicity and reliability in mind through our use of Linux open source technology, plus our proprietary real time video and application software. Its innovative play-out scheduler makes it easy to broadcast a full schedule of recurring and one-time programs. All scheduling features are available using a standard Web browser. Remote control and management gives you unmatched flexibility.

Video Playout	
Output	MPEG-2 TS over IP (Gigabit Ethernet)
Channels	Standard with 1 SD Channel, Option to Expand to 4 SD channels.

Program Scheduling	
Interface	Integrated HTML Browser Based (Secure)
Playlists	Scheduled Time Based Program Playouts
Recurring	Scheduled Recurring Playout
Station Timing	Locked to NTP Standard
Continuity	Auto-play Default Content on Program Gaps

Storage	
Capacity	1 TB
Drives	1

Physical	
Power	100 - 240 VAC / 200 Watts
Dimension	17.2" x 1.7" x 11.3" (W x H x D)
Weight	10 lbs
Form Factors	1 RU 19" Standard

External Interfaces & Connections (Typically Used)	
Front Panel	Power/Fail/Drive LEDs, Power/Reset Switch
Rear Panel	Dual 10/100 BT/1000 BT, Link/Data LEDs
Output	MPEG-2 TS over IP (Gigabit Ethernet)

Content	
Formats	MPEG-2 Transport Stream; MPEG-2 or H.264 (Optional) Video Constant Bit Rate (CBR), ATSC, CableLabs® HD & SD Compatible
Bit Rates	Up to 19.4 Mbps Total Output

Content Introduction	
Protocols	FTP & SMB
Interface	10/100/1000 BT

Network Management	
Interfaces	Web Browser
Protocols	SMB, HTTP, NTP Remote Management and Software Upgrades
Features	Environment Monitoring

Firmware	
OS	Linux
Device Drivers	All Standard Drivers
Features	Schedule Playout Drag and Drop Scheduling, Event Recur and Ripple Content Management Custom, Searchable Metadata and Categories; Thumbnails Website Program Guide Automatic Generation Playlist Import/Export Integrated Network Firewall XML-TV/ TV Guide Metadata CCMS / GDP Traffic APIs VDCP Content Analysis & Validation Missing File Notifications: XML, Email System Health Notifications CableLabs® ADI Metadata (Optional)

Note: Specifications are subject to change without notice.

TelVue Corporation is a broadcast technology innovator and leader in community and hyperlocal television broadcast delivery. The company's products and services enable our customers to dramatically streamline and enhance their channel programming and delivery, reduce costs, and be better positioned to meet the new challenges of a rapidly evolving industry. TelVue's professional quality equipment and services include; digital video servers, broadcast automation and workflow applications, live internet streaming, video on demand, and multi-user digital signage.

