



TelVue Princeton™ C500W

MPEG-2 Workstation

Encode and Edit High Quality MPEG-2 Broadcast Files

File-based broadcasting lets you dramatically improve your station's operations. But to get there, you'll need a cost effective way to encode your analog NTSC video to high quality digital files. Now, you can begin to transform your station's operations with our easy to use C500W MPEG-2 Encoding / Editing Workstation. The C500W lets you easily encode analog video to high quality digital video files and save them directly to the integrated hard drive or other network storage devices.

The C500W can be equipped with one of three different real-time MPEG-2 encoder cards to meet your unique station needs. The basic "MVR" encoder option provides standard MPEG-1 & 2 encoding of NTSC (or PAL) analog video and stereo audio inputs. The MVR also provides an on-screen confidence monitor and a MPEG play-out channel for content previews to an external TV monitor. You can also choose optional MPEG-2/4 encoders that support analog and/or SDI input and professional (9-pin) deck control.

The C500W includes a very capable native MPEG-2 video editing application with DVD ingest, authoring and burning to an integrated Dual Layer DVD drive. As an option, you can add the ProCoder™ digital file based transcoder for rapid video file conversion.

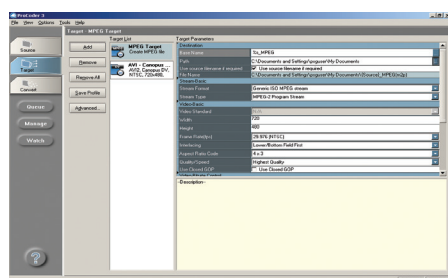
The C500W is the perfect companion to TelVue Princeton's B1000 or B3000 Digital Video Broadcast Server. With one or more C500W's at your station you can be certain that the new video files you create will play out perfectly on your station's digital video server.

FEATURES

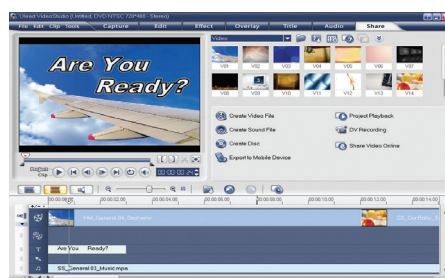
- All in one solution for Digital Video File ingest
- Small form factor, high performance desktop PC
- Intel Dual core processor
- Ultra Quiet operation
- Windows XP Professional OS
- Integrated MPEG-2 hardware based Encoding and preview layout
- Native MPEG-2 Editing Application
- Dual Layer DVD Authoring and Burning
- 500 GB SATA II hard drive
- 10/100/1000 Mb/s network interface for transfers and previews
- Specially designed for PEG-TV stations for encoding analog video to digital video files

OPTIONS

- 17" LCD Display, keyboard, mouse and speakers
- Analog to MPEG-2/4 encoding with Sony 9-pin professional deck control
- SDI to MPEG-2/4 encoding with Sony 9-pin professional deck control
- ProCoder™ Digital Video Transcoding



MPEG-2 Encoding Interface



Native MPEG-2 Editing



C500W Specifications

File-based broadcasting makes your station more efficient and cost effective. When you go digital with TelVue Princeton™, you get all the tools you need to encode, store, analyze, process and play-out MPEG files. Best of all, you can be sure that all TelVue Princeton™ products integrate together and make you and your station more productive, as quickly as possible.

Real-time MPEG Encoder Options	
- MVR	MPEG - 1 / 2 Program Stream - CBR / VBR
- 200	MPEG - 1 / 2 / 4 Program or Transport Stream - CBR / VBR
- 250	MPEG - 1 / 2 / 4 Program or Transport Stream - CBR / VBR
- CL	CableLabs™ compatible for -200 or -250

Video Encoding	
Formats	MVR Encoder: MPEG-1/2 PS, 200 & 250 Encoders: MPEG - 1/2/4 PS & TS
Resolution	Up to 720x480 full D1
Bit Rates	MVR - Up to 12 Mbps, 200 & 250 - Up to 15 Mbps
Frame Rate	Up to 30.00 FPS
Audio Format	MPEG - 1 Layer II up to 384Kbps

Video Interface	
- MVR	Composite (NTSC / PAL) Video on RCA / S-Video, Stereo Audio on RCA
- 200	Composite (NTSC / PAL) Video on BNC / Balanced Audio on XLR
- 250	SDI or Composite (NTSC / PAL) Video on BNC / Balanced Audio on XLR

VTR Deck Control	
- MVR	None
- 200	RS-422 - Sony 9-pin standard protocol
- 250	RS-422 - Sony 9-pin standard protocol

Confidence Monitor	
- MVR	On-screen & Preview Play-out on rear panel - NTSC/PAL Composite Video & RCA
- 200	None (available on T74000E)
- 250	None (available on T74000E)

Physical	
Power Requirement	100/240V
Power Consumption	300W Max
Dimension (WxHxD)	15.65" H x 4.59" W x 14.25"D
Form Factors	SFF Quiet

Optional Software	
ProCoder™	Multi-format Transcoding Application (Supports DV, MPEG, H.263, H264, WM, QT)

Internal Storage	
Capacity	Up to 500GB
Drives	1 x SATA II
External	Expandable via USB 2.0 External Hard Drive

Compatibility	
Video Server	B100, B1000 + B3000 Series

DVD Drive / Burner	
DVD	Dual Layer / +R

Networking	
Protocols	FTP, HTTP, SMB
Throughput	Up to 80 Mbps
Interface	10/100/1000 Mb/s

External Interfaces & Connections (Typically Used)	
Front Panel	Power / Fail / Drive LEDs / Power / Reset Switch / USB 2.0
Rear Panel	10/100/1000BT, Link / Data LEDs
	2 x USB 2.0

Note: Specifications are subject to change without notice.

TelVue Corporation is a broadcast technology innovator and leader in community and hyperlocal television broadcast delivery. The company's products and services enable our customers to dramatically streamline and enhance their channel programming and delivery, reduce costs, and be better positioned to meet the new challenges of a rapidly evolving industry. TelVue's professional quality equipment and services include; digital video servers, broadcast automation and workflow applications, live internet streaming, video on demand, and multi-user digital signage.

